

Social Impact Assessment

Townsville region

Solquartz and Private Energy Partners have commissioned a voluntary Social Impact Assessment (SIA) for our proposed Townsville region projects. These include the Northern Quartz Campus, within the Lansdown Eco-Industrial Precinct, which incorporates the Supernode North Battery Energy Storage System (BESS) and metallurgical silicon production facilities. We are also investigating the development of solar farms in the Woodstock area, including two sites along Rowe Road (adjacent to existing transmission lines).

The SIA will be undertaken by independent consultants to evaluate how these projects may affect nearby communities. A key component of this assessment will include seeking the views of local people to understand their concerns and aspirations.

About Social Impact Assessments

Queensland project proponents are required to undertake an SIA for:

- wind farms and large-scale solar projects being assessed under the *Planning Act 2016*
- projects undergoing an Environmental Impact Statement (EIS) under the *State Development and Public Works Organisation Act 1971* or *Environmental Protection Act 1994*.

An SIA assesses possible project impacts and benefits to nearby communities including amenity, community values, employment, housing, health and wellbeing, and local business opportunities.

Further information on Queensland's SIA process is available in the Social Impact Assessment Guideline available on the Department of State Development, Infrastructure and Planning website.

What will this regional SIA consider?

The SIA will consider the social impacts and benefits of Solquartz and Private Energy Partners' Townsville region projects across their lifecycle, focusing on the Woodstock district community and Townsville region. This regional approach will support project planning, provide information for Townsville City Council and the State Assessment and Referral Agency as the development assessment managers, and ensure our projects have positive social outcomes.

The SIA process includes developing actions to avoid or reduce impacts and enhance project benefits. These actions often include:

- ongoing, meaningful engagement with community members and stakeholders
- measures to protect the values of local communities and Traditional Owners
- addressing population influx and demand for skilled labour
- planning for increased housing and accommodation needs
- supporting community safety, health and wellbeing
- prioritising local employment and local business opportunities.

Project-specific SIAs

Following completion of the regional SIA, project-specific SIAs will be developed for each individual project in accordance with their approval requirements under the *Planning Act 2016*. The findings of the regional and project-specific SIAs will be shared with the community.

Share your views

The SIA is being conducted by consultants from Elliott Whiteing, who will be supported by Roundtable Engagement and Communications. They will organise meetings and workshops with local community members and groups, Traditional Owners, Council, government stakeholders and other interested community members.

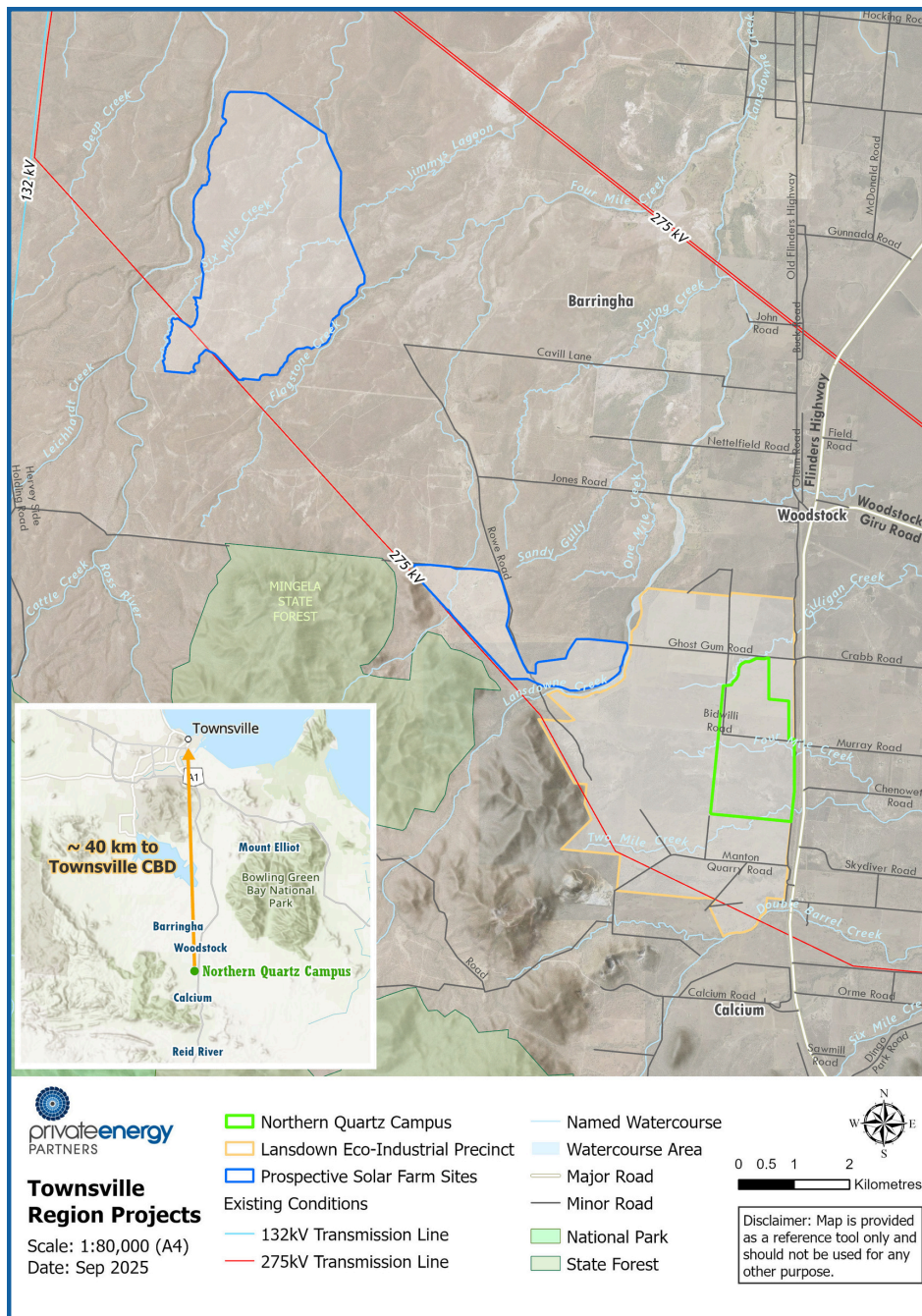
If you would like to be involved, please contact the SIA team on 0475 065 105 or community@roundtablecomms.com.au to register your interest, and they will provide you with further details.

About our projects

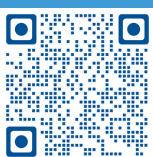
Our projects are located in and around the Lansdown Eco-Industrial Precinct (LEIP), south of Woodstock. They include:

- **Northern Quartz Campus**, which is being developed by both Private Energy Partners and Solquartz and incorporates the Supernode Battery Energy Storage System (BESS), metallurgical silicon production facilities, and a biochar plant. Construction of these projects is planned to commence in 2026 and be completed in 2029.
- **Prospective solar farm sites**, which Private Energy Partners is assessing for suitability to provide energy to Northern Quartz Campus.

Project locations



Learn more about Solquartz, Private Energy Partners and our projects



Website: www.solquartz.com.au
or by scanning the QR code
Phone: 1800 975 039
Email: community@private-energypartners.com



Solquartz

